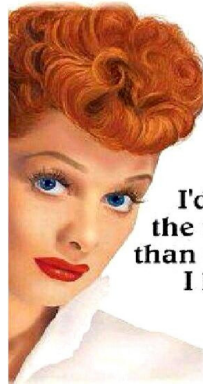




AT HOME WITH LUCY

Tuesday, May 16, 2017

After meeting your **Step On Guide**, start your day at **Ecklof's Bakery**, home of the Swedish rye limpa bread that Lucy had shipped to California. Enjoy a behind the scenes tour to see how they make braided Danish, layered pastries and much more. Of course, there are samples.



*I'd rather regret
the things I've done
than regret the things
I haven't done.*

Lucille Ball

Next, enjoy a plated lunch at **The Falcon's Nest**.

Please select your entrée listed below when booking:

1. Swiss Steak
2. Meat Lasagna
3. Apple Cranberry Stuffed Chicken Breast
4. Chef Choice Vegetarian

After lunch, tour the **Desilu Studio**. The studio offers displays of the authentically reproduced television studio sets that were created to tour the country as part of the "I Love Lucy" 50th anniversary traveling exhibit. See the New York apartment and the Hollywood hotel set. You can also test your "vitameatavegamin" skills with an interactive display and much more.

Next door, visit the **Lucy/Desi Museum**. There are 8 galleries, 7 screening areas and 2 Lucy gift shops, plus displays of their personal belongings, including Lucy's Mercedes Benz.

Now it's time to sit back and relax on your motorcoach for a **Lucy Driving Tour** narrated by your step on guide.

The last stop of the day will be at **Peterson's Candies** where you may want to pick up a tasty treat for your ride home.

Features:

- Motorcoach Transportation
- Fully Escorted
- Ecklof's Bakery Tour
- Plated Lunch at Falcon's Nest
- Desilu Studio Tour
- Lucy/Desi Museum
- Lucy Driving Tour
- Peterson's Candies Visit
- All Applicable Taxes, Meal Gratuities, Guide & Drivers Tip

Date:

Tuesday, May 16

Arrive at Center:

7:30 AM

Depart from Center:

8:00 AM

Approximate Return:

7:00 PM

Sign Up:

Monday, March 13

Price Per Person:

\$80.00



Joseph Emminger, Supervisor
Town of Tonawanda

Dan Crangle, Councilman
Chairman, Youth, Parks & Recreation Committee

Jeffrey P. Ehlers, Director
Youth, Parks & Recreation Dept.